

*Way towards luxury...*





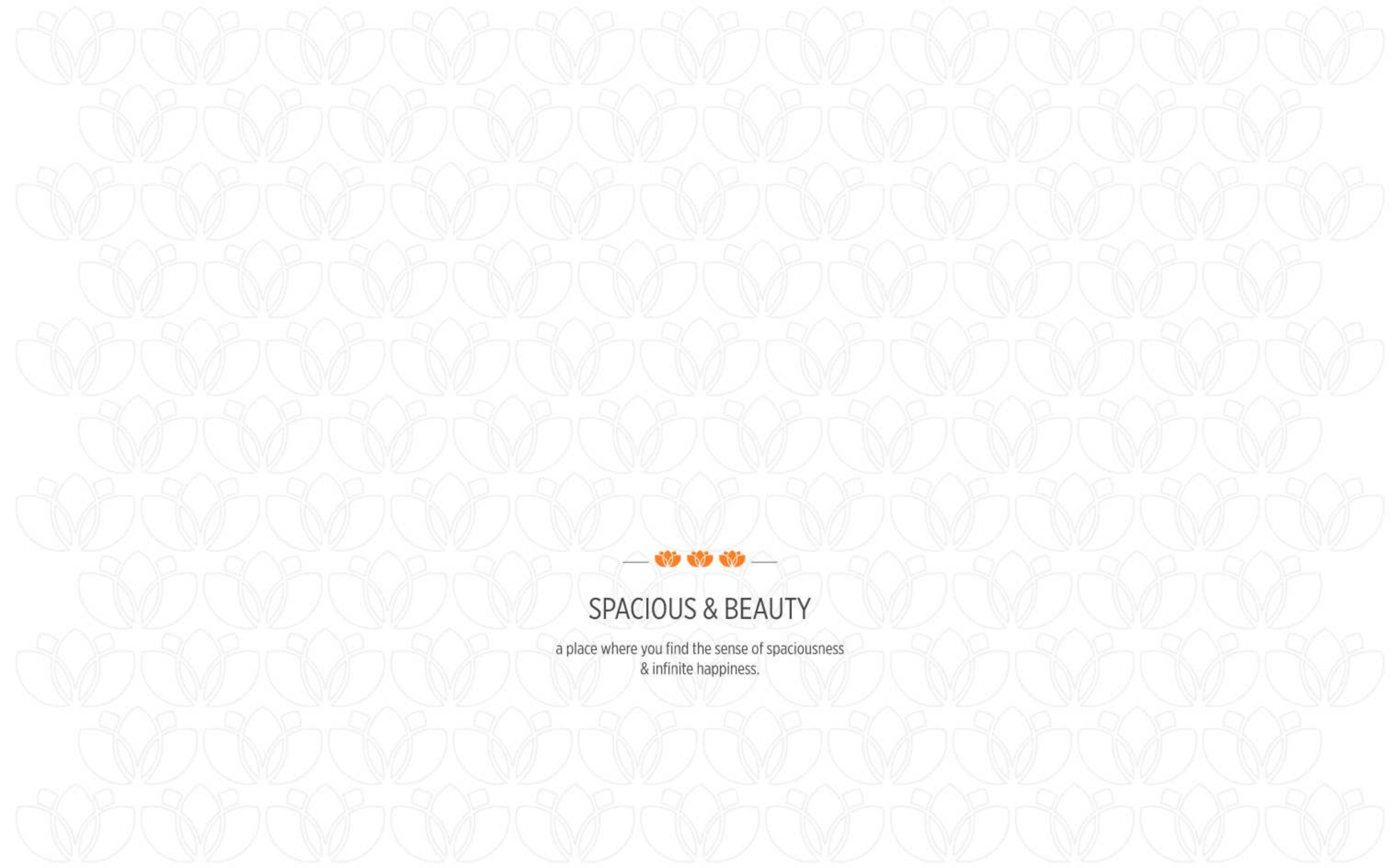


REDEFINED DREAMS COME PERFECT

—  —  
**3 BHK LUXURIOUS LIVING**

this avenue does not provide homes for aspiring people, but a lifestyle  
to live higher on a pedestal.





## SPACIOUS & BEAUTY

a place where you find the sense of spaciousness  
& infinite happiness.





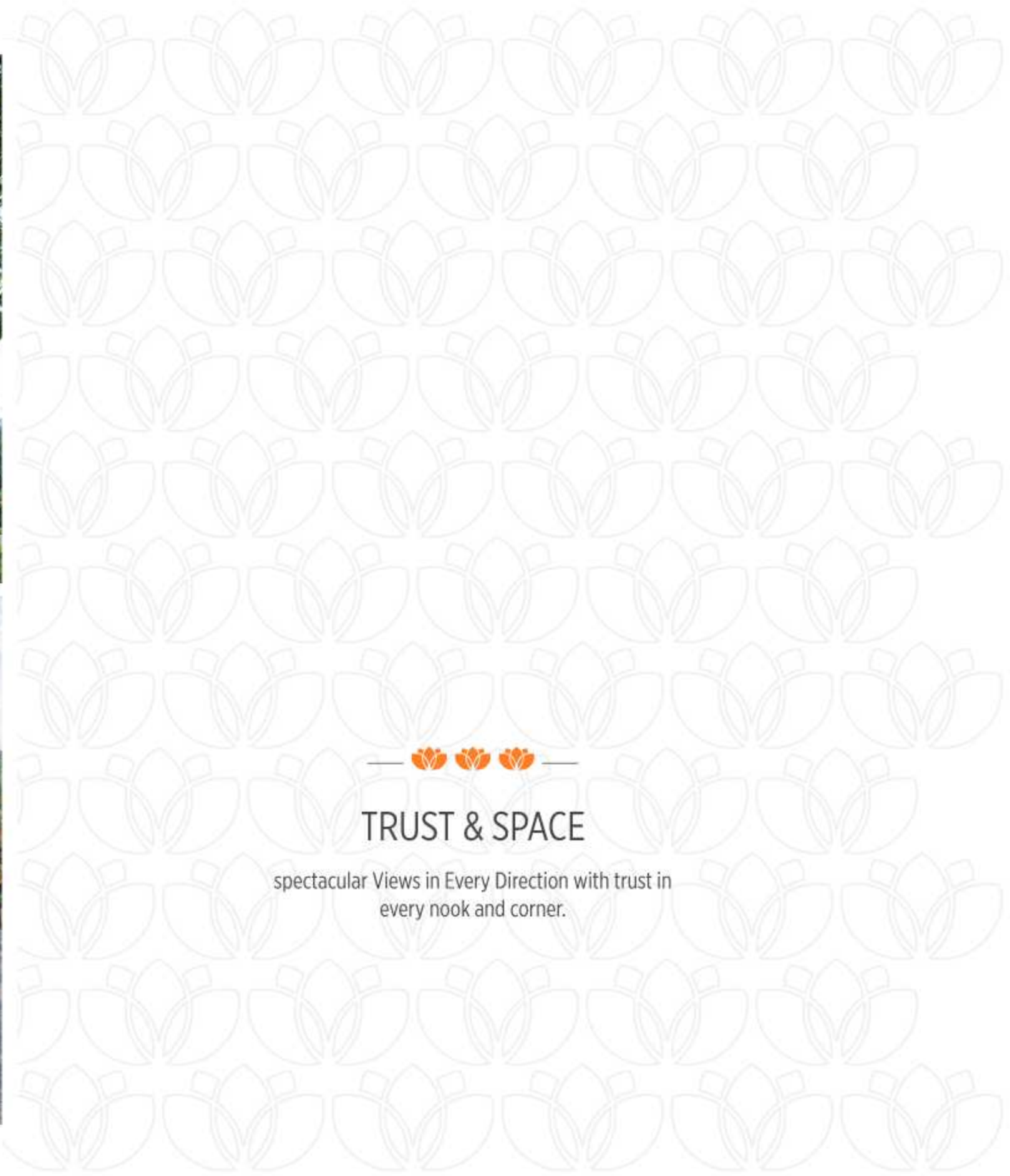


— 🌸 🌸 🌸 —  
**VISION & VIEW**

the perfect start to your adventure, because it's simply  
the best with new view

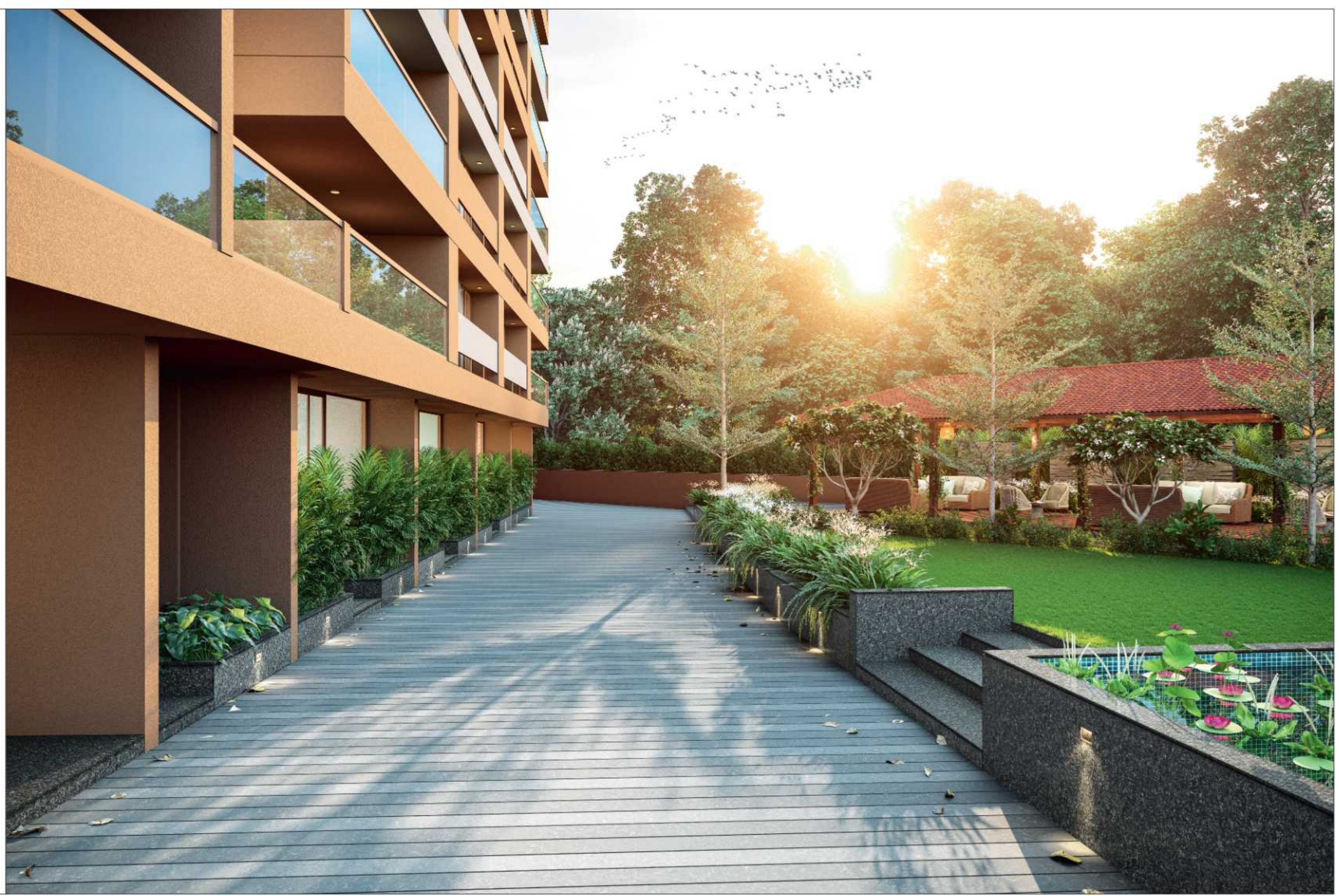






### TRUST & SPACE

spectacular Views in Every Direction with trust in every nook and corner.

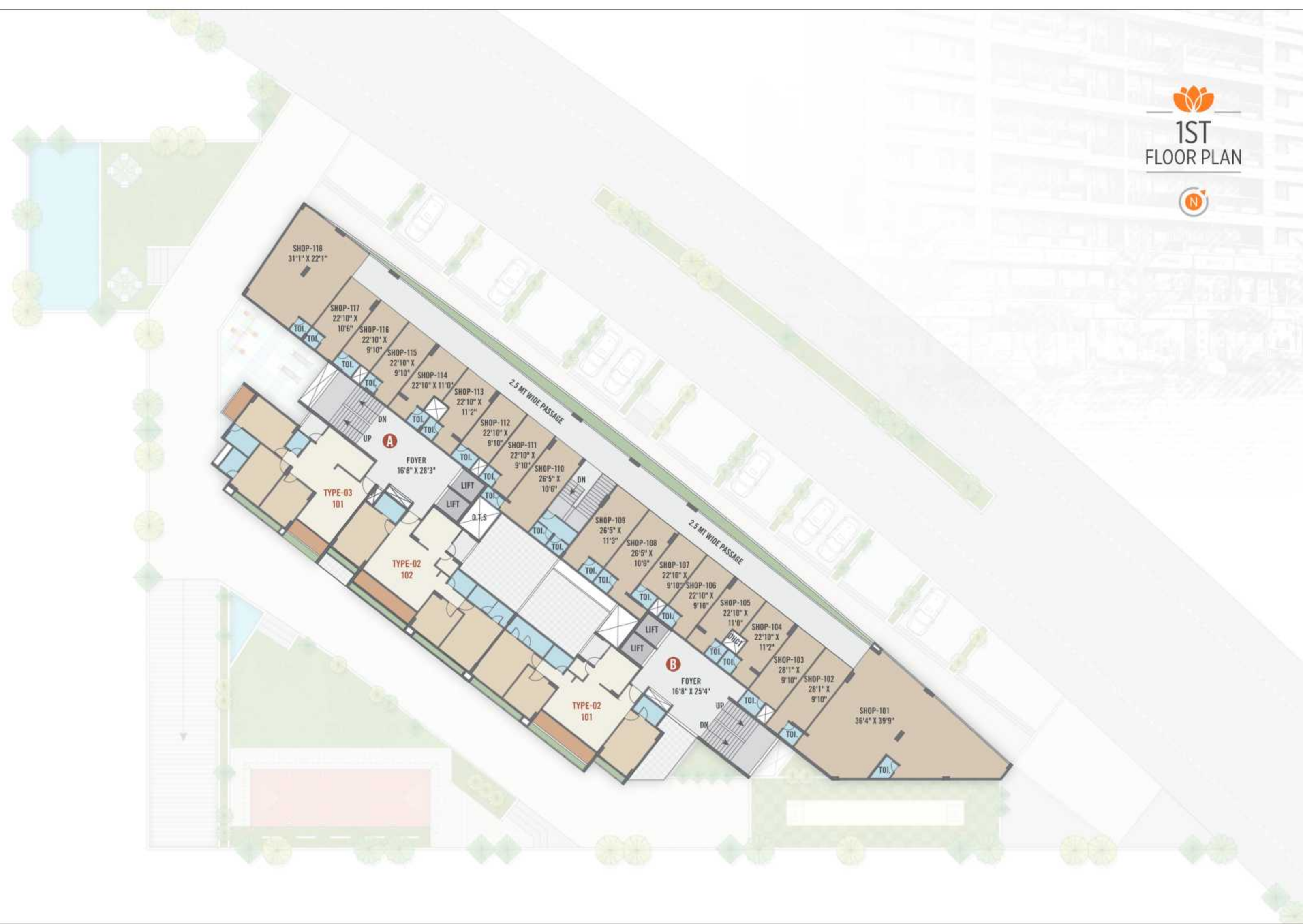




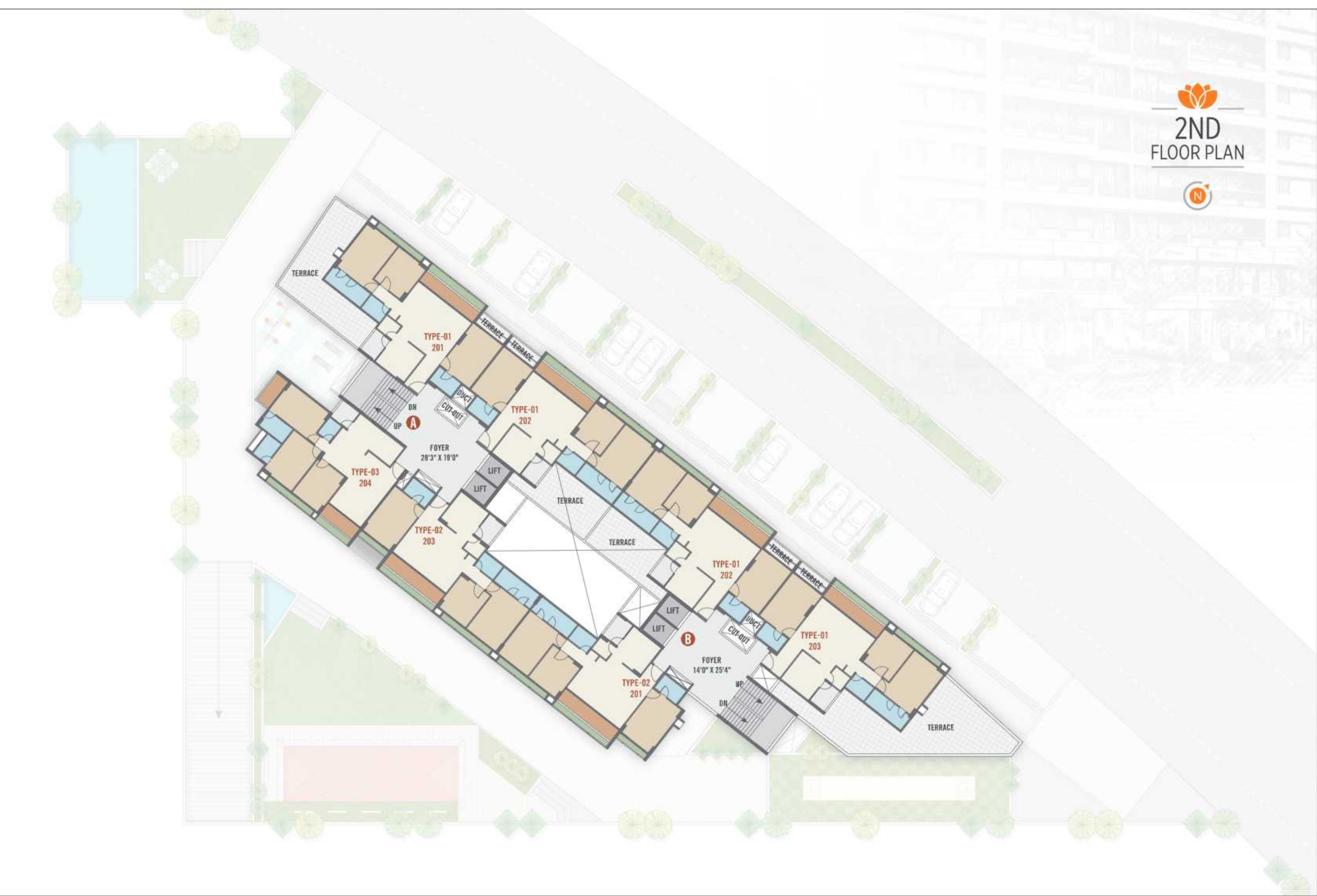




1ST FLOOR PLAN

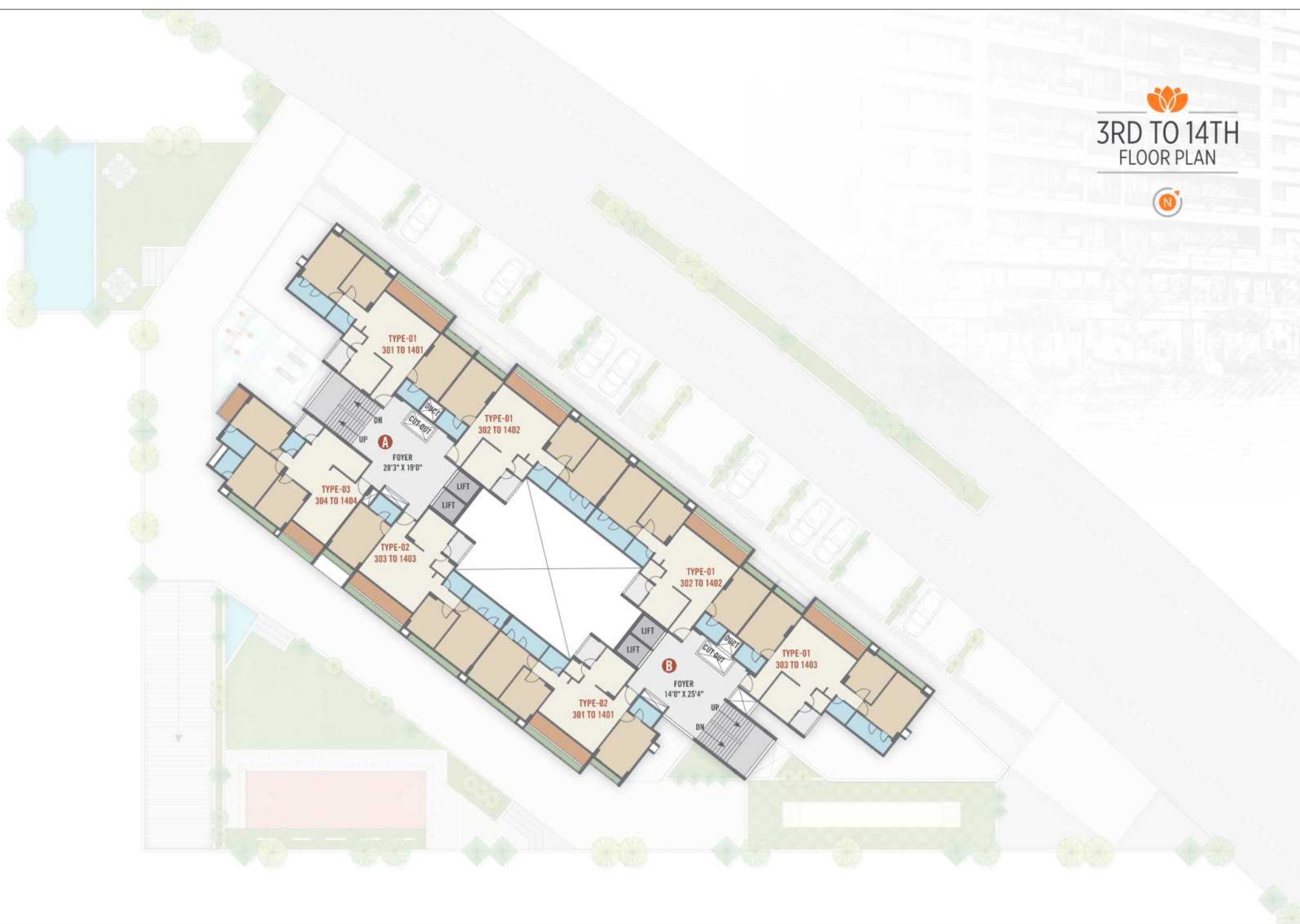


2ND FLOOR PLAN





3RD TO 14TH  
FLOOR PLAN





3 BHK  
UNIT PLAN

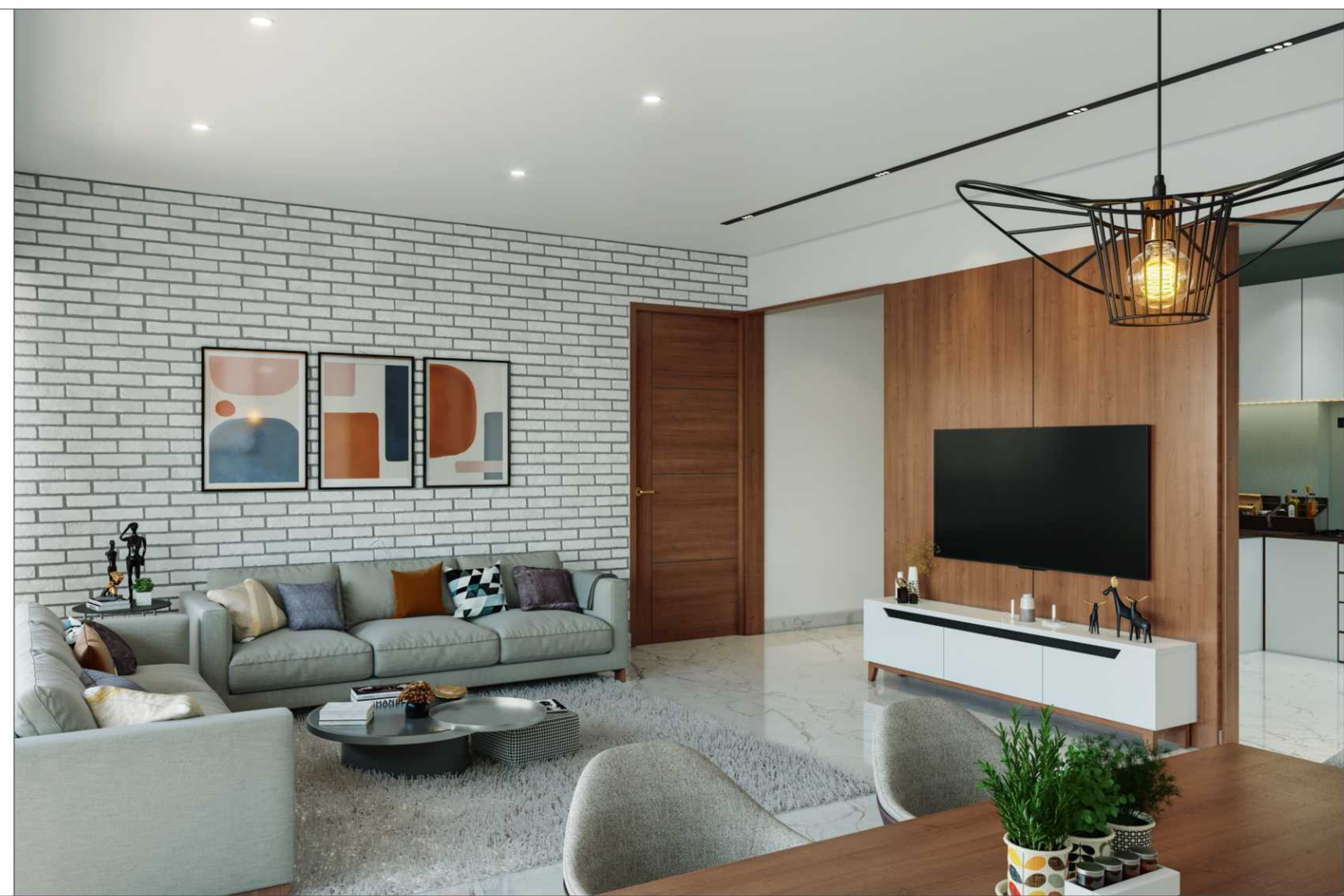


3 BHK  
UNIT PLAN





  
3 BHK  
UNIT PLAN





# AMPLE OF AMENITIES FOR A CLASSY LIFESTYLE



- ENTRY GATE
- GARDEN
- GYMNASIUM
- YOGA SPACE
- PARKING
- TERRACE GARDEN
- SEATING AREA
- CHILDREN PLAY AREA
- BOX CRICKET
- 24 HRS WATER SUPPLY
- WATER BODY
- SPLASH POOL
- INDOOR GAME
- LIBRARY
- LIFT
- GAZEBO
- OPEN AIR THEATRE
- FIRE SAFETY
- E. V. CHARGING POINT
- A.C. FOYER
- 24 X 7 SECURITY
- CCTV CAMERA
- INTERNAL ROADS

— 🌸 🌸 🌸 —

## EXTRAORDINARY AMENITIES

ideal & breathtaking location, spacious & luxurious design quality construction, ultra modern club amenities & much more...





🌸🌸🌸  
ALL YOU NEED IS A BIG LEAP OF FAITH

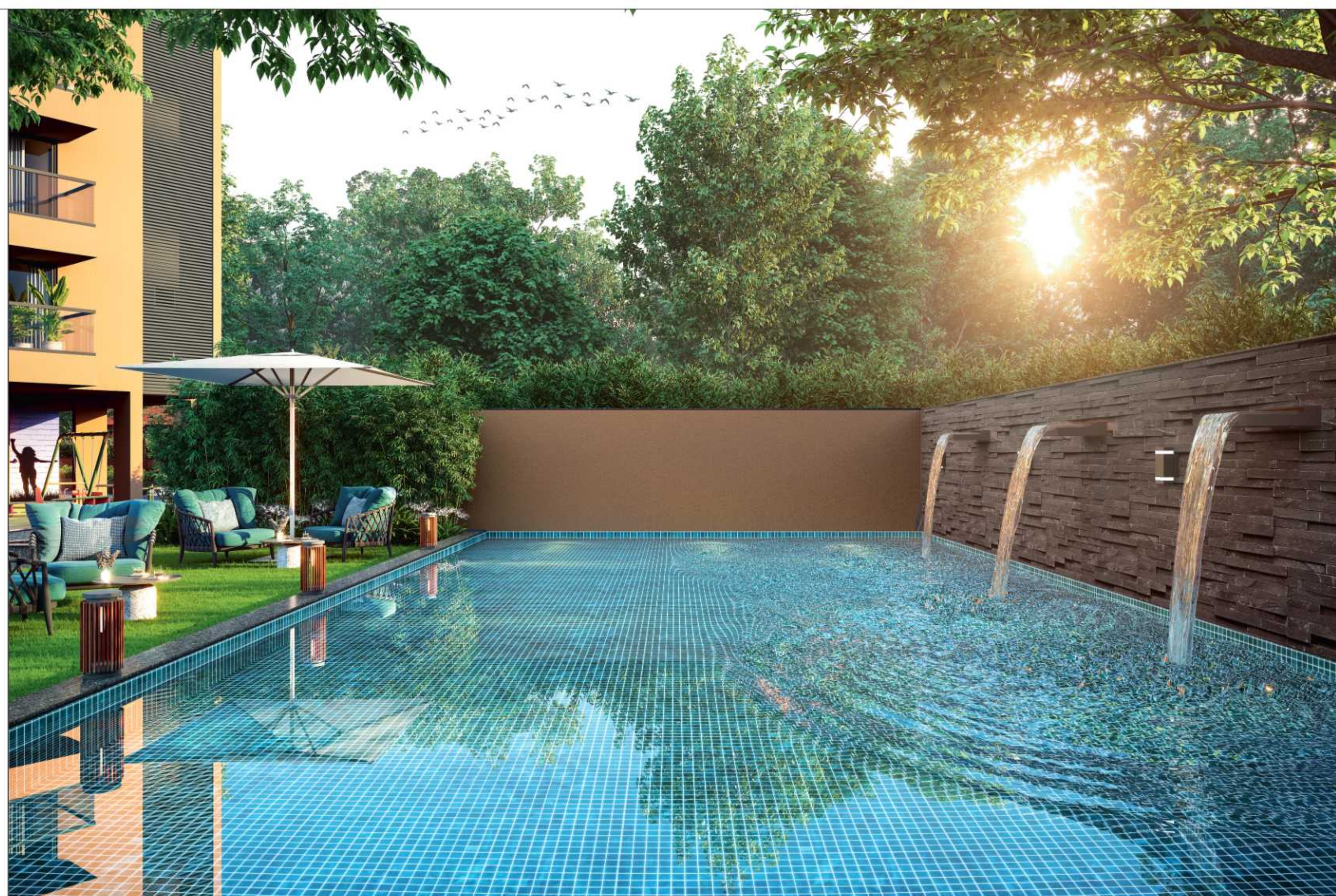




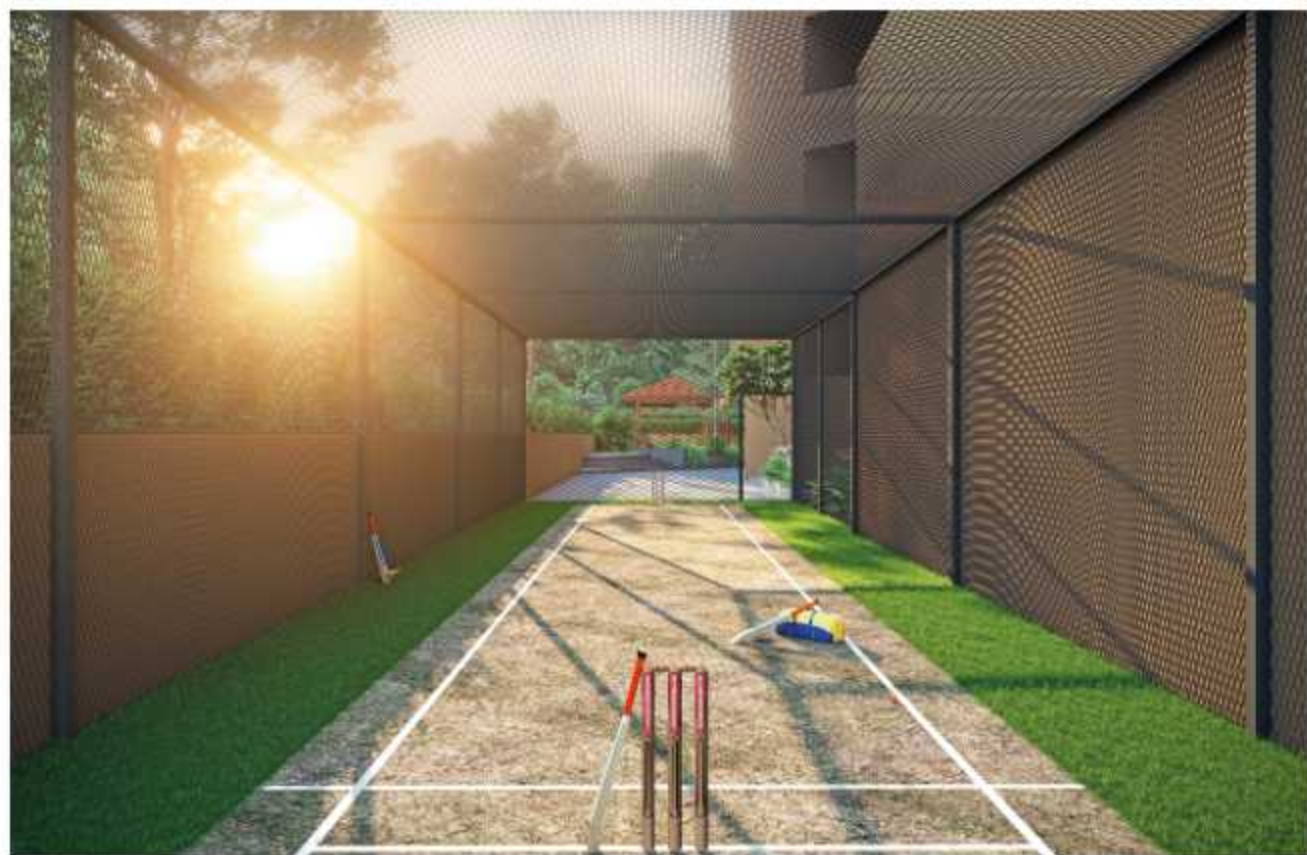


— 🌸 🌸 🌸 —  
**PURITY & CONCEPTS**

a life is full of the concepts of simplicity, which  
gives your home a new Style







— 🌸 🌸 🌸 —  
**QUALITY & NATURE**

feel the tranquility in every direction because it's designed for a natural living like nothing on earth.







## SPECIFICATIONS



### STRUCTURE

R. C. C. frame structure, structure design as per IS code considering earthquake resistance.



### WALL FINISH

All internal walls will be finished with putty over mala plaster.  
All external wall will be finished with double coat mala plaster with texture finish.



### PLUMBING

Concealed plumbing with premium quality pipes and fittings for continuous water supply, a common borewell.



### FLOORING

Premium quality designer vitrified tiles in drawing room dining area with kitchen and all bedroom area.



### TOILETS

Full covered elegantly designed toilets with designer tiles and colour coordinated sanitary ware.



### ELECTRIFICATION

concealed copper wiring with adequate number of electrical points & branded modular switches. TV point in drawing room & TV & AC points in bedrooms.



### KITCHEN

Ready to use granite finished platform with ss sink, Designer glazed tiles with dedo up to beam level. Plumbing and electrical provisions for water purifier & washing machine, kota stones self in store room.



### DOOR & WINDOWS

Decorative wooden polished main entrance door with brass fitting and fixtures. All other doors are flush door. Fully/Gaized aluminum windows with stone revile.



### TERRACE

Open terrace finished with suitable water proofing with china - mosaic flooring for heat reflection.



#### NOTE :

1.) Commencement and timely execution of the project is subject to all necessary approvals from relevant govt. authorities, occurrence of natural calamities or any other external factors beyond developer's control. 2.) The dimensions shown in the brochure are approximate. 3.) The developer reserves the right to change, revise or make any modification, addition, omission or alteration in the scheme as a whole or part thereof, at their sole discretion. 4.) The brochure is only for illustration & private circulation purpose & is not a legal document or a binding one. 5.) Government levies like GUDA, UGVCL, Stamp Duty, Registration charges, Legal charges, GST and any other additional charges are to be borne by the member. 6.) Subject to Gandhinagar Jurisdiction.







Address :

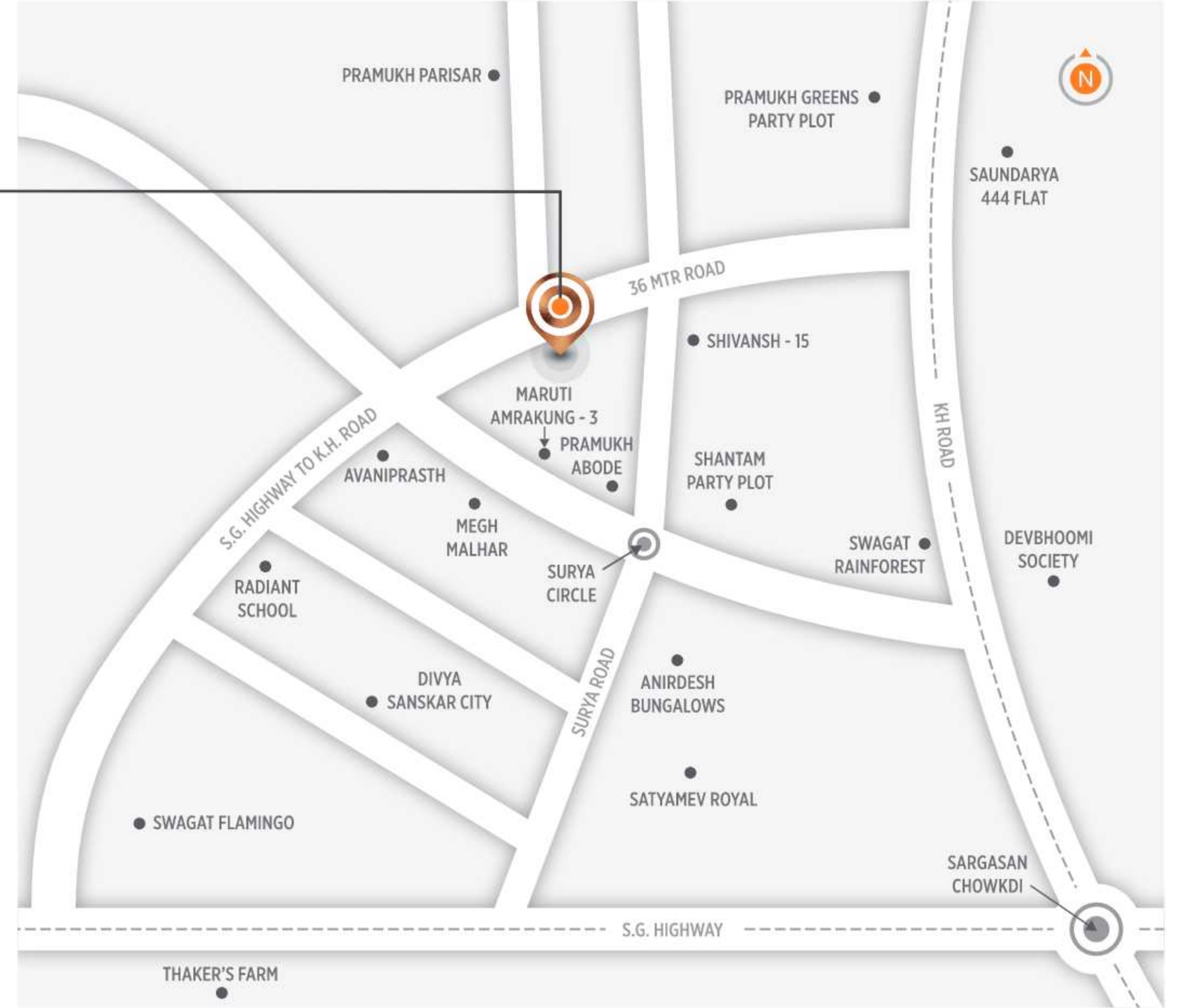
**Shriprad Aayansh,**  
Tp- 26, B/h Pramukh Abord,  
Nr. Sargasan Chokdi, Kh Road - 382421.

Contact :

Krutik Patel | Manoj Patel  
+91 99984 03251 | +91 93758 11024

**CONNECTIVITY**

DESTINATION	K.M.
S. G. HIGHWAY	2.0
SCHOOL	2.0
MAHATMA MANDIR	4.0
RAILWAY STATION	4.0
HOTEL LEELA	4.0
ADALAJ	5.0
MALL & MULTIPLEX	5.0
HOSPITAL	7.0
INFO CITY	9.5
VAISHNODEVI	10.0
PATHIKA ASHRAM	12.5
AIRPORT	17.5



*Live the life...*

Architect



Str. Eng.







*A Trendy Luxury View...*